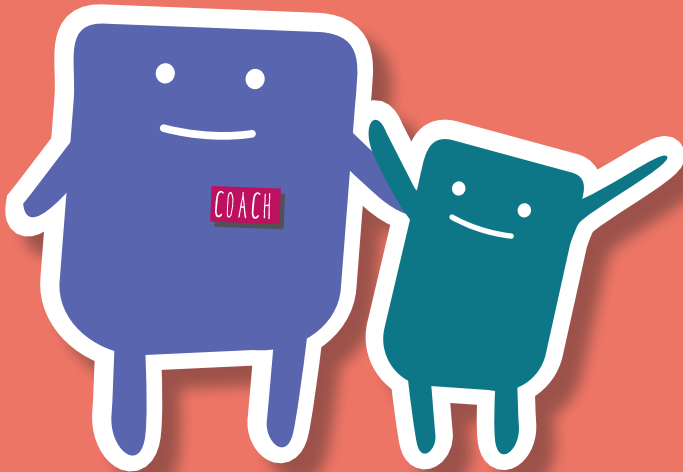


early intervention



**I coach, I child,
I hour a week**

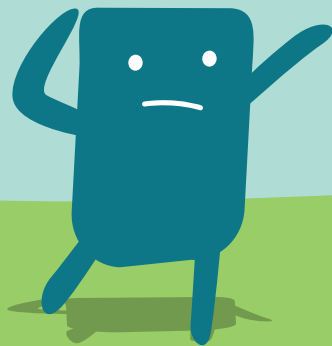
TLG Early Intervention: The Need

All over the UK, children are struggling in school for all kinds of reasons and many families are suffering without hope.

The effects of bullying, bereavement, family breakdown, poverty or being in the care system can have a huge effect on a child's education. Some children may be struggling with a lack of confidence, have no positive role models, or just need an adult to talk to.

But there is HOPE.

Imagine if thousands of church volunteers across the country gave just one hour a week to come alongside every struggling child, and crucially connect families into the life of a local church. Imagine how different their future could be.



The hard facts...

The number of 5-16 year olds excluded from school each year would fill **Wembley Arena 22 times over.**

In the latest data available, there were **36,000 primary-aged children** excluded in the year.

4,000 of these exclusions were **children under 6.**

80% of the prison population have been **excluded from school.**



The Opportunity:

**I coach, I child,
I hour a week**

TLG Early Intervention gives the Church a practical solution to support children, families and schools in their community.

The programme sees volunteers coach a child from either a primary or secondary school. It is about spending time with a child to listen; letting them know someone cares and that a church community believes they matter.

TLG trains and equips every volunteer coach, providing them with specialised resources to help children explore their choices and the consequences of their decisions. With guidance from the school, volunteer coaches can bridge families into other activities run by your church.

Reuben's Story

As Reuben arrived at secondary school, he began to follow in the footsteps of his older brother, who had been excluded several years earlier.



Using TLG's coaching activities, Reuben's coach Mark helped him think about school, the impact of his brother's choices, and what he would like to change about his own choices.

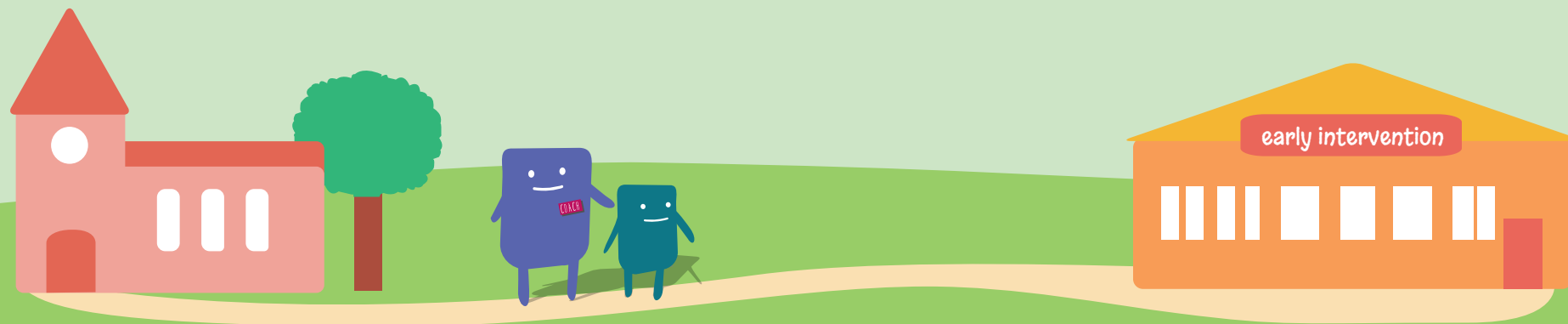
Now, Reuben takes responsibility for his own behaviour and with Mark's support is finding new ways to manage himself well in lessons and with friends.

Sophie's Story

"I was finding school tough. I had my Dad being a bit angry and my mum and dad splitting up and a few of my animals and cats dying. I didn't know who to go to.

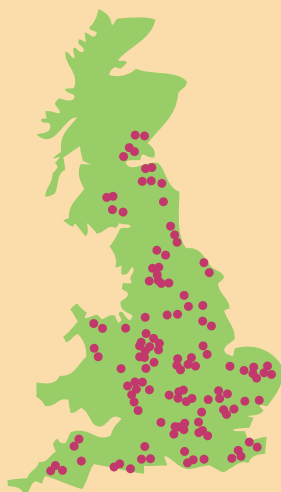


My coach was kind and caring and understanding. I think it's comforting that I know who I should go to if I get a bit upset or scared. Thank you for being really kind and helping me figure out ways to stop worrying."



The Vision

Over the next 4 years, TLG's vision is to have 300 centres bringing hope and a future to communities across the UK. That's thousands of volunteers helping thousands of children and families each year!



"My behaviour has improved – even my teachers have said so. When they say I'm doing well I feel really happy and then my coach Steve comes to my mind."

- Ryan, 9



1 in 5 families are receiving extra help from the partner church.

There are now **over 5,000** coaching sessions taking place across the year, and that number is growing.

"Early intervention is the highlight of my Mondays and I always come out with a smile on my face. I've realised how much one hour a week with a child can do."

- Gary, volunteer coach



"I used to get in trouble a lot. But now I don't anymore."

- Sean



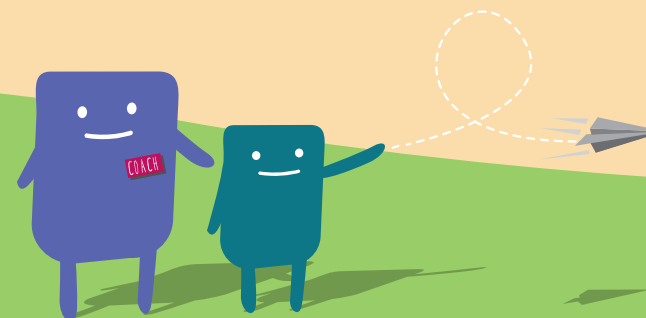
"Thank you for changing my life from bad to good. You have always been someone I can talk to."

- Jess



"This is possibly the only hour this boy is actively listened to on a one to one basis"

- Deputy Head Teacher



The Next Steps...

1. Check out our website www.tlg.org.uk to sign up to and attend a church partnership forum in your area.



2. Alternatively, you can contact the TLG Partnerships Team on 01274 900377 or email partnerships@tlg.org.uk to find out more.



tlg.org.uk



facebook.com/tlg.org



[@tlg_org](https://twitter.com/tlg_org)

t. 01274 900 373 e. info@tlg.org.uk

Registered Office and contact address: National Support Centre, Hope Park, Bradford BD5 8HH.
TLG The Education Charity is a company limited by guarantee, registered in England and Wales no. 3690871